

**DESIGN SERVICES**

**PLUS, INC.**

DESIGN, PLANNING  
AND DEVELOPMENT

9050 UNIT C  
RED BRANCH RD.  
COLUMBIA, MD 21045  
PHONE: 240.338.5598

**CONSULTANT DISCLAIMER:**  
This is a Prototype design only. The drawings include plans, sections, elevations, typical construction details, diagrammatic layouts of building systems and related information intended to convey the design intent for architectural, structural, civil, pool, mechanical, plumbing and electrical systems. The design information set forth within these documents may not be suitable for a particular site or certain local conditions. InterContinental Hotels Group and its retained design consultants that prepared these prototype design documents are not responsible for adaptation of the design to a particular site, compliance of the design with applicable laws, regulations, ordinances and codes, or final design reviews required to prepare construction documents. The Franchisee and its retained architect or engineering consultants shall be exclusively responsible for any final signed construction documents prepared based on information contained within these documents.

InterContinental Hotels Group **DISCLAIMER:** THIS IS A PROTOTYPE DESIGN ONLY. IT MAY NOT BE SUITABLE FOR A PARTICULAR SITE OR CERTAIN LOCAL CONDITIONS. InterContinental Hotels Group is NOT RESPONSIBLE FOR ADAPTATION OF THE DESIGN TO A PARTICULAR SITE, OR FOR THE COMPLIANCE OF THE DESIGN WITH APPLICABLE LAWS, REGULATIONS, ORDINANCES AND CODES.

Project Title  
**Holiday Inn Express & Suites, Straight Pavilion.**  
Client  
**ARUN LUTHRA**



Seal

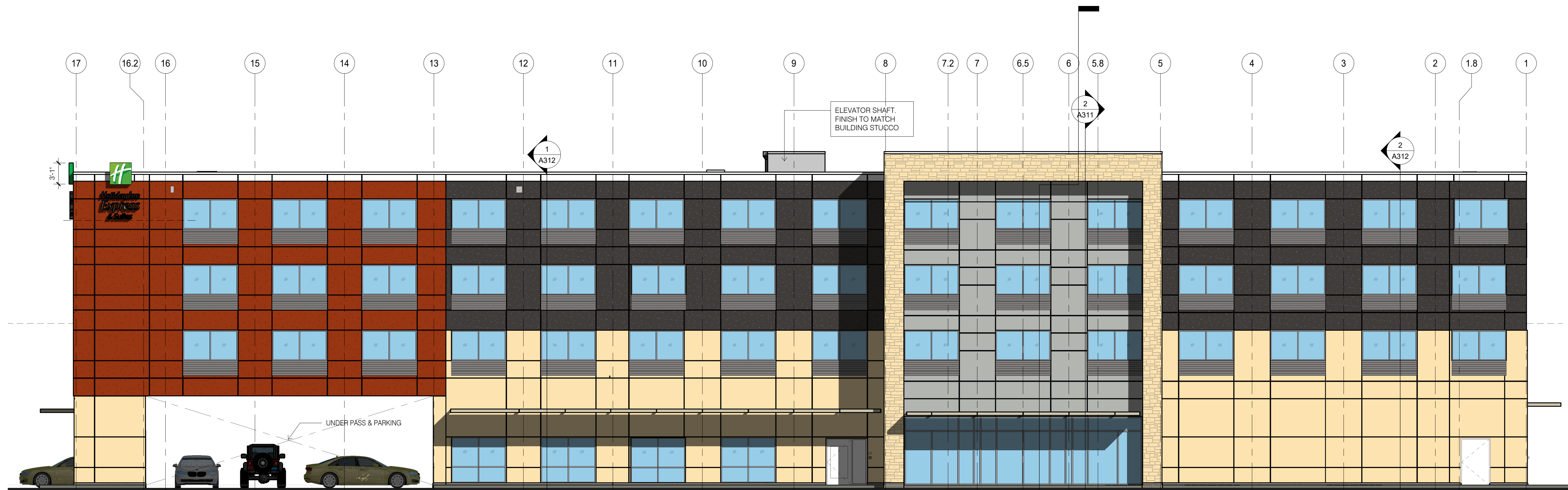
Printed Name \_\_\_\_\_  
Signature \_\_\_\_\_  
Date Issued \_\_\_\_\_

Reg. No.	Description	Date

Project number  
**20039** Date  
**11/15/13**  
Drawn by  
Author Checked by  
Author Checker

**EXTERIOR ELEVATIONS  
COLORED**

**P200c**



**2** EXTERIOR ELEVATION - EAST  
1/8" = 1'-0"



**1** EXTERIOR ELEVATION - WEST  
1/8" = 1'-0"

**DESIGN SERVICES**

**PLUS, INC.**

DESIGN, PLANNING  
AND DEVELOPMENT

9050 UNIT C  
RED BRANCH RD.  
COLUMBIA, MD 21045  
PHONE: 240.338.5598

**CONSULTANT DISCLAIMER:** This is a Prototype design only. The drawings include plans, sections, elevations, typical construction details, diagrammatic layouts of building systems and related information intended to convey the design intent for architectural, structural, civil, pool, mechanical, plumbing and electrical systems. The design information set forth within these documents may not be suitable for a particular site or certain local conditions. InterContinental Hotels Group and its retained design consultants that prepared these prototype design documents are not responsible for adaptation of the design to a particular site, compliance of the design with applicable laws, regulations, ordinances and codes, or final design reviews required to prepare construction documents. The Franchisee and its retained architect or engineering consultants shall be exclusively responsible for any final signed construction documents prepared based on information contained within these documents.

InterContinental Hotels Group DISCLAIMER: THIS IS A PROTOTYPE DESIGN ONLY. IT MAY NOT BE SUITABLE FOR A PARTICULAR SITE OR CERTAIN LOCAL CONDITIONS. InterContinental Hotels Group IS NOT RESPONSIBLE FOR ADAPTATION OF THE DESIGN TO A PARTICULAR SITE, OR FOR THE COMPLIANCE OF THE DESIGN WITH APPLICABLE LAWS, REGULATIONS, ORDINANCES AND CODES.

Project Title  
Holiday Inn Express & Suites,  
Straight Pavilion.  
Client  
ARUN LUTHRA



Seal

Printed Name

Signature

Date Issued

Reg. No.

No.	Description	Date

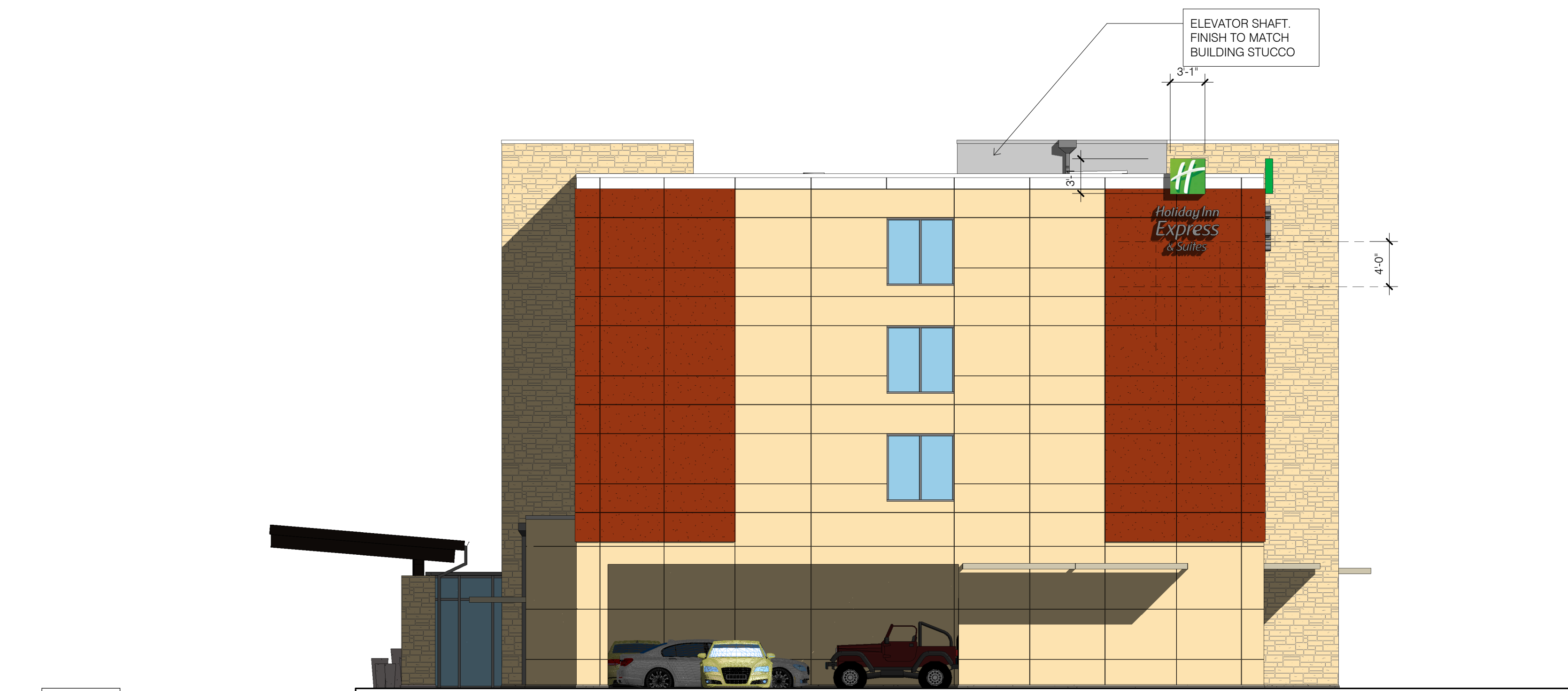
Project number 20039	Date 11/15/13
Drawn by Author	Checked by Checker

**EXTERIOR  
ELEVATIONS  
COLORED**

**P201c**



**2** EXTERIOR ELEVATION - SOUTH  
1/8" = 1'-0"



**1** EXTERIOR ELEVATION - NORTH  
1/8" = 1'-0"