

CONSULTANT DISCLAIMER: This is a Prototype design only. The drawings include plans, sections, elevations, typical construction details, diagrammatic layouts of building systems and related information intended to convey the design intent for architectural, structural, civil, pool, mechanical, plumbing and electrical systems. The design information set forth within these documents may not be suitable for a particular site or certain local conditions. InterContinental Hotels Group and its retained design consultants that prepared these prototype design documents are not responsible for adaptation of the design to a particular site, compliance of the design with applicable laws, regulations, ordinances and codes, or final design reviews required to prepare construction documents. The Franchisee and its retained architect or engineering consultants shall be exclusively responsible for any final signed construction documents prepared based on information contained within these documents.

InterContinental Hotels Group DISCLAIMER: THIS IS A PROTOTYPE DESIGN ONLY. IT MAY NOT BE SUITABLE FOR A PARTICULAR SITE OR CERTAIN LOCAL CONDITIONS. InterContinental Hotels Group IS NOT RESPONSIBLE FOR ADAPTATION OF THE DESIGN TO A PARTICULAR SITE, OR FOR THE COMPLIANCE OF THE DESIGN WITH APPLICABLE LAWS, REGULATIONS, ORDINANCES AND CODES.

**Project Title**  
 2014 Holiday Inn Express  
 Prototype, Straight Pavilion.  
**Client**  
 InterContinental Hotels Group



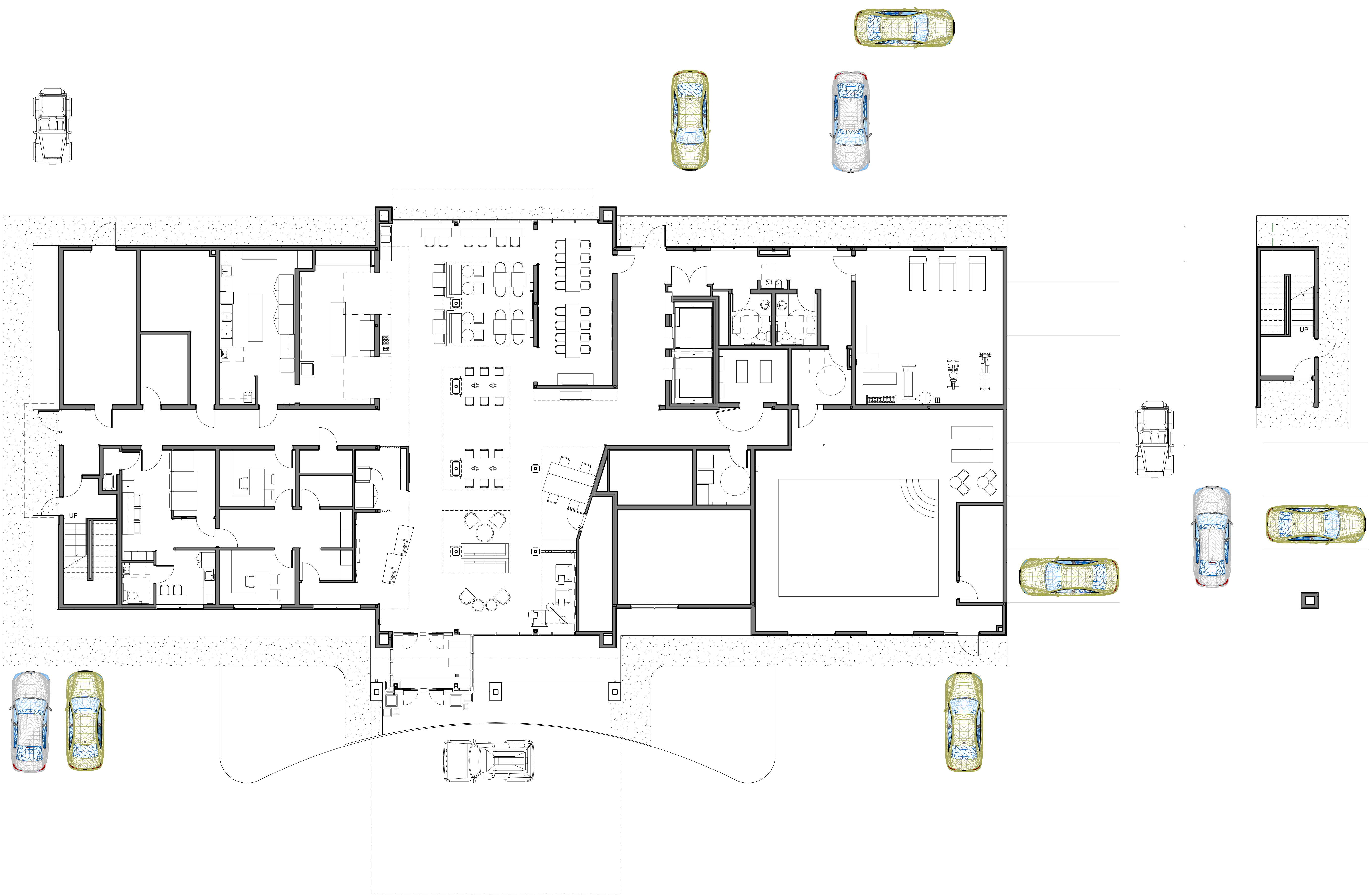
Seal

Printed Name \_\_\_\_\_  
 Signature \_\_\_\_\_  
 Date Issued \_\_\_\_\_

Reg. No.	Description	Date

Project number 41812	Date 10/28/13
Drawn by Author	Checked by Checker

## PRESENTATION LEVEL 1



1 PRESENTATION LEVEL 1  
 1/8" = 1'-0"

DESIGN SERVICES  
PLUS, INC.  
DESIGN, PLANNING  
AND DEVELOPMENT

9050 UNIT C  
RED BRANCH RD.  
COLUMBIA, MD 21045  
PHONE: 240.338.5598

**CONSULTANT DISCLAIMER:**  
This is a Prototype design only. The drawings include plans, sections, elevations, typical construction details, diagrammatic layouts of building systems and related information intended to convey the design intent for architectural, structural, civil, pool, mechanical, plumbing and electrical systems. The design information set forth within these documents may not be suitable for a particular site or certain local conditions. InterContinental Hotels Group and its retained design consultants that prepared these prototype design documents are not responsible for adaptation of the design to a particular site, compliance of the design with applicable laws, regulations, ordinances and codes, or final design reviews required to prepare construction documents. The Franchisee and its retained architect or engineering consultants shall be exclusively responsible for any final signed construction documents prepared based on information contained within these documents.

InterContinental Hotels Group DISCLAIMER. THIS IS A PROTOTYPE DESIGN ONLY. IT MAY NOT BE SUITABLE FOR A PARTICULAR SITE OR CERTAIN LOCAL CONDITIONS. InterContinental Hotels Group IS NOT RESPONSIBLE FOR ADAPTATION OF THE DESIGN TO A PARTICULAR SITE, OR FOR THE COMPLIANCE OF THE DESIGN WITH APPLICABLE LAWS, REGULATIONS, ORDINANCES AND CODES.

Project Title  
2014 Holiday Inn Express  
Prototype, Straight Pavilion.  
Client  
InterContinental Hotels Group



Seal

Printed Name \_\_\_\_\_

Signature \_\_\_\_\_

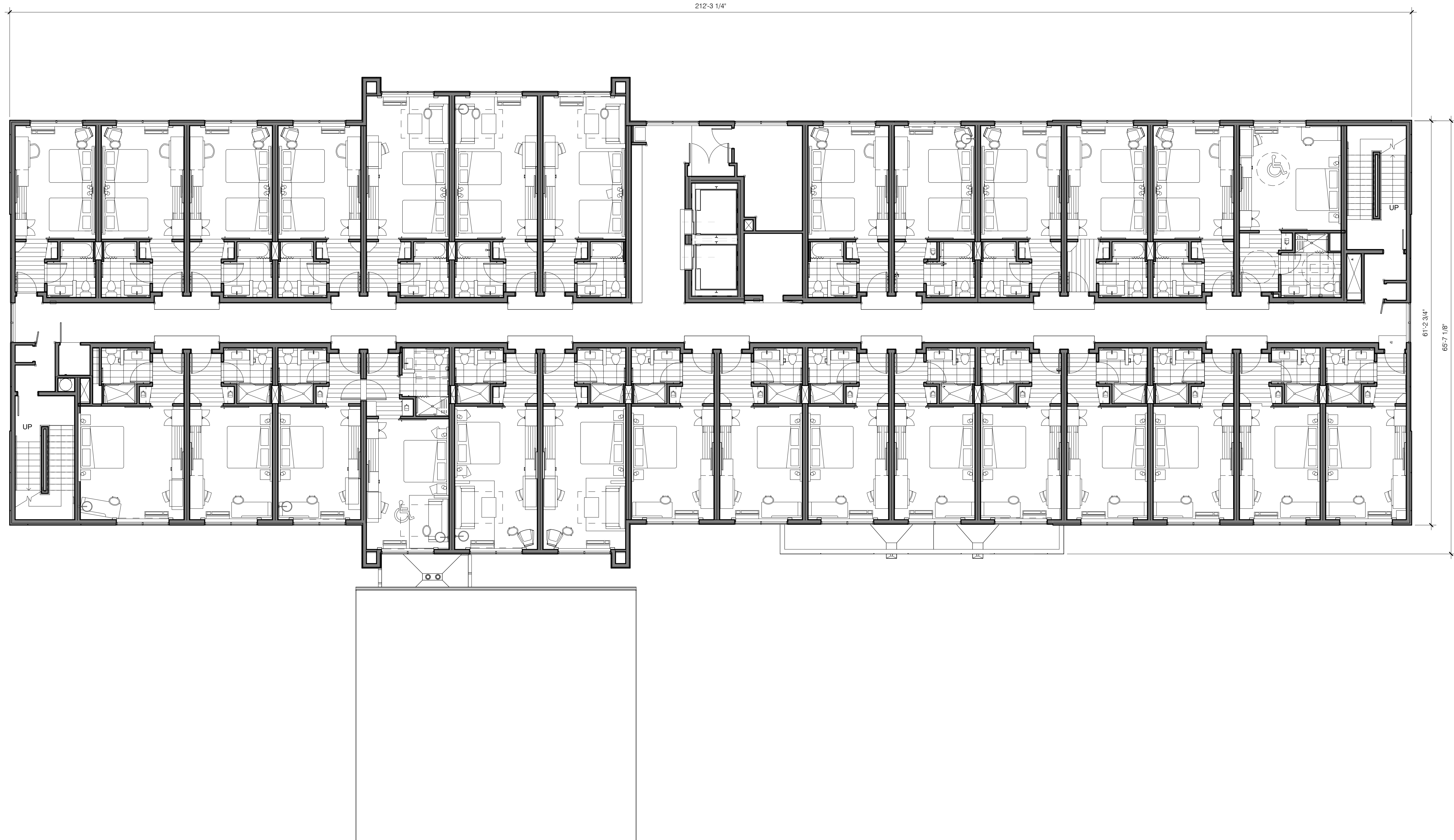
Date Issued \_\_\_\_\_

Reg. No.	Description	Date

Project number 41812	Date 10/28/13
Drawn by Author	Checked by Checker

**PRESENTATION  
LEVEL 2**

**P112**



1 PRESENTATION LEVEL 2  
1/8" = 1'-0"

8/8/2015 11:19:10 AM









**CONSULTANT DISCLAIMER:**  
This is a Prototype design only. The drawings include plans, sections, elevations, typical construction details, diagrammatic layouts of building systems and related information intended to convey the design intent for architectural, structural, civil, pool, mechanical, plumbing and electrical systems. The design information set forth within these documents may not be suitable for a particular site or certain local conditions. InterContinental Hotels Group and its retained design consultants that prepared these prototype design documents are not responsible for adaptation of the design to a particular site, compliance of the design with applicable laws, regulations, ordinances and codes, or final design reviews required to prepare construction documents. The Franchisee and its retained architect or engineering consultants shall be exclusively responsible for any final signed construction documents prepared based on information contained within these documents.

InterContinental Hotels Group DISCLAIMER: THIS IS A PROTOTYPE DESIGN ONLY. IT MAY NOT BE SUITABLE FOR A PARTICULAR SITE OR CERTAIN LOCAL CONDITIONS. InterContinental Hotels Group is NOT RESPONSIBLE FOR ADAPTATION OF THE DESIGN TO A PARTICULAR SITE, OR FOR THE COMPLIANCE OF THE DESIGN WITH APPLICABLE LAWS, REGULATIONS, ORDINANCES AND CODES.

Project Title  
**2014 Holiday Inn Express  
Prototype, Straight Pavilion.**  
Client  
**InterContinental Hotels Group**



Seal

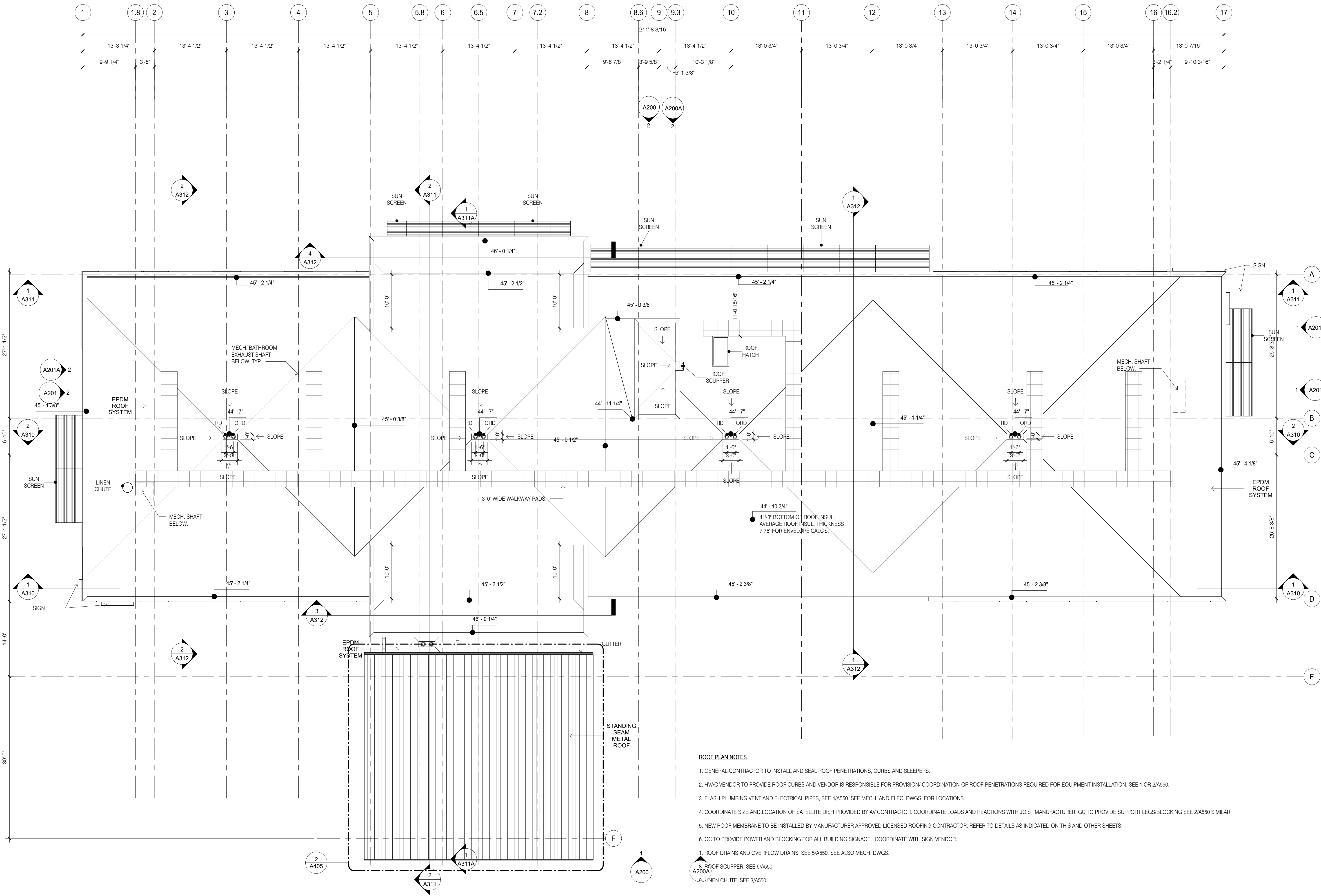
Printed Name \_\_\_\_\_  
Signature \_\_\_\_\_  
Date Issued \_\_\_\_\_

Reg. No.	Description	Date

Project number  
**41812**  
Date  
**08/08/14**  
Drawn by  
**EB/JB**  
Checked by  
**JR/CK**

**ROOF PLAN**

**A115**



**ROOF PLAN NOTES**

- GENERAL CONTRACTOR TO INSTALL AND SEAL ROOF PENETRATIONS, CURBS AND SLEEPERS.
  - HVAC VENDOR TO PROVIDE ROOF CURBS AND VENDOR IS RESPONSIBLE FOR PROVISION/ COORDINATION OF ROOF PENETRATIONS REQUIRED FOR EQUIPMENT INSTALLATION. SEE 1 OR 2/A550.
  - FLASH PLUMBING VENT AND ELECTRICAL PIPES, SEE 4/A550. SEE MECH. AND ELEC. DWGS. FOR LOCATIONS.
  - COORDINATE SIZE AND LOCATION OF SATELLITE DISH PROVIDED BY AV CONTRACTOR. COORDINATE LOADS AND REACTIONS WITH JOIST MANUFACTURER. GC TO PROVIDE SUPPORT LEGS/BLOCKING SEE 2/A550 SIMILAR.
  - NEW ROOF MEMBRANE TO BE INSTALLED BY MANUFACTURER APPROVED LICENSED ROOFING CONTRACTOR. REFER TO DETAILS AS INDICATED ON THIS AND OTHER SHEETS.
  - GC TO PROVIDE POWER AND BLOCKING FOR ALL BUILDING SIGNAGE. COORDINATE WITH SIGN VENDOR.
- 1 ROOF DRAINS AND OVERFLOW DRAINS, SEE 5/A550. SEE ALSO MECH. DWGS.  
 8 ROOF SCUPPER, SEE 6/A550.  
 9 LINEN CHUTE, SEE 3/A550.

1 ROOF PLAN  
1/8" = 1'-0"

R:\600-6999\6935-01 MIDS-SCALE HOTEL PROTO\REVIT 8/8/2014 11:10:22 AM

**CONSULTANT DISCLAIMER:** This is a Prototype design only. The drawings include plans, sections, elevations, typical construction details, diagrammatic layouts of building systems and related information intended to convey the design intent for architectural, structural, civil, pool, mechanical, plumbing and electrical systems. The design information set forth within these documents may not be suitable for a particular site or certain local conditions. InterContinental Hotels Group and its retained design consultants that prepared these prototype design documents are not responsible for adaptation of the design to a particular site, compliance of the design with applicable laws, regulations, ordinances and codes, or final design reviews required to prepare construction documents. The Franchisee and its retained architect or engineering consultants shall be exclusively responsible for any final signed construction documents prepared based on information contained within these documents.

InterContinental Hotels Group **DISCLAIMER. THIS IS A PROTOTYPE DESIGN ONLY. IT MAY NOT BE SUITABLE FOR A PARTICULAR SITE OR CERTAIN LOCAL CONDITIONS.** InterContinental Hotels Group is NOT RESPONSIBLE FOR ADAPTATION OF THE DESIGN TO A PARTICULAR SITE, OR FOR THE COMPLIANCE OF THE DESIGN WITH APPLICABLE LAWS, REGULATIONS, ORDINANCES AND CODES.

Project Title  
**2014 Holiday Inn Express Prototype, Straight Pavilion.**  
Client  
**InterContinental Hotels Group**



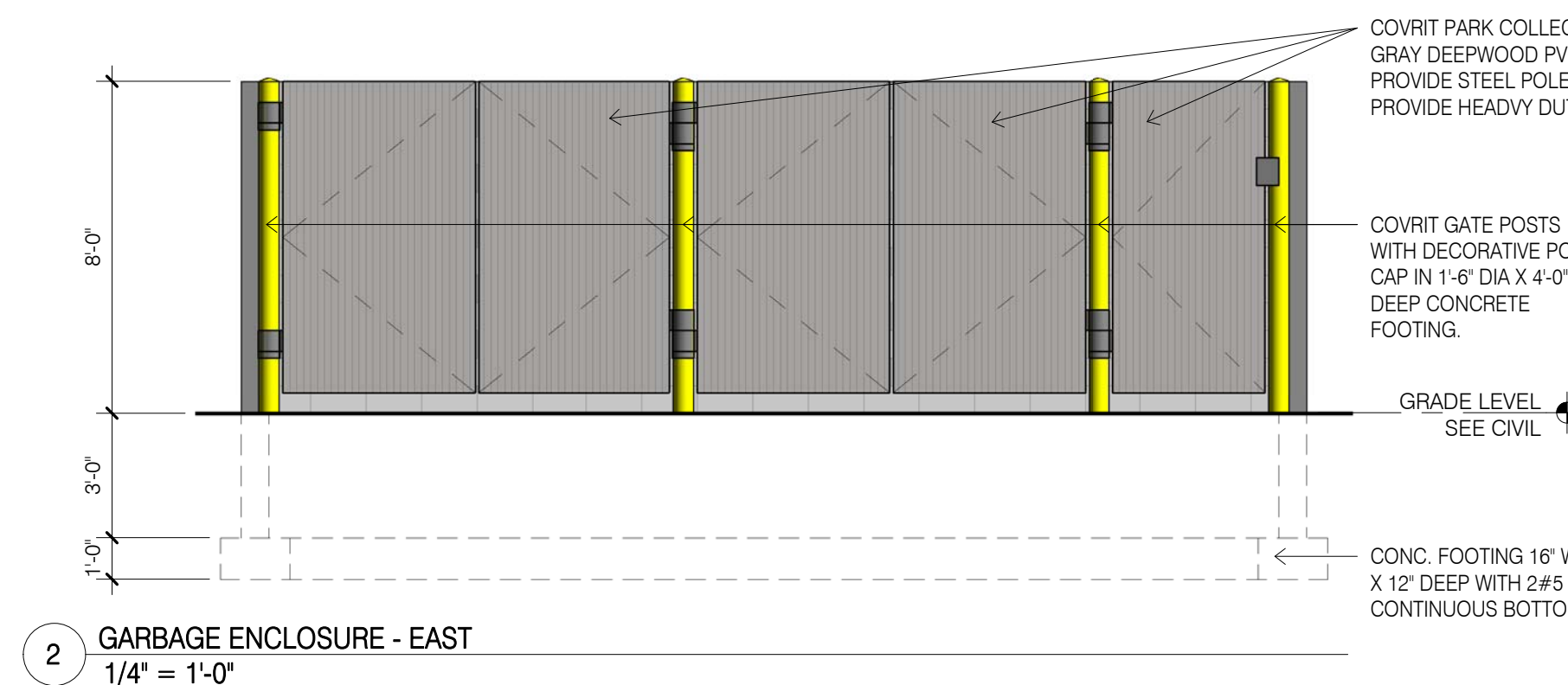
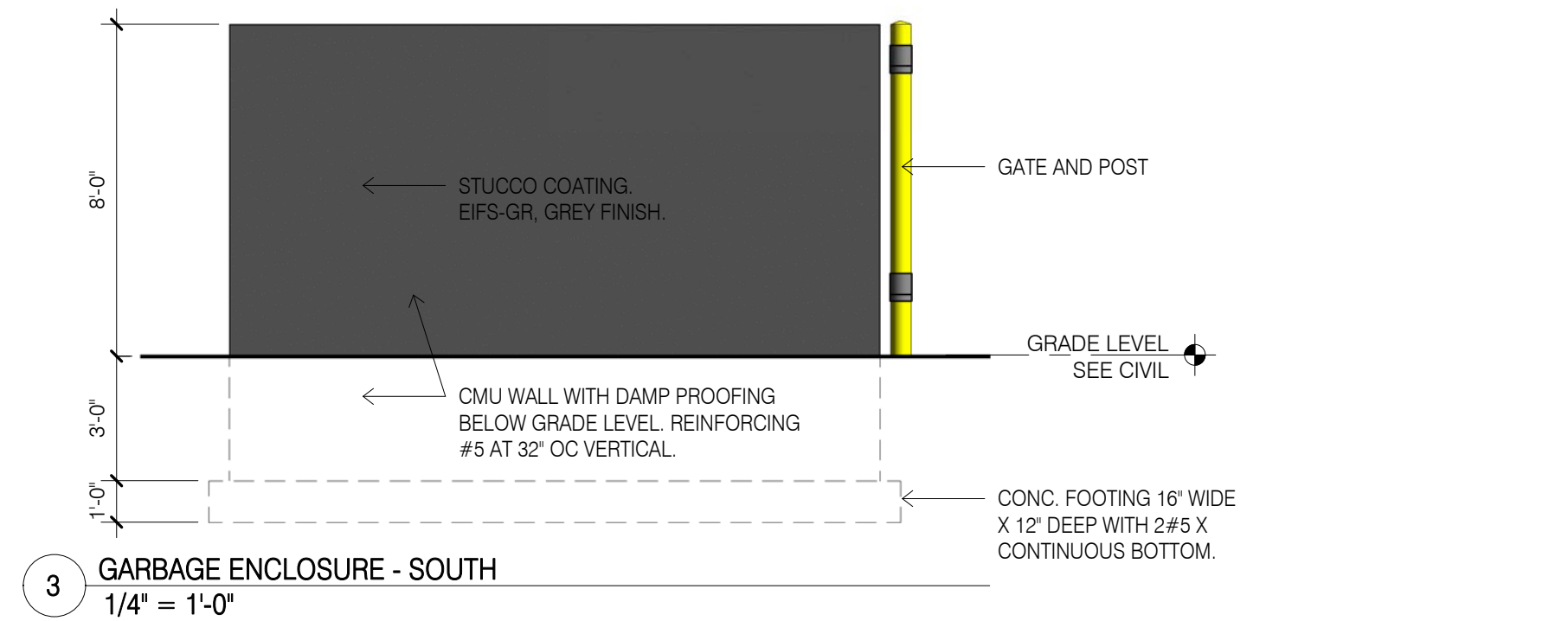
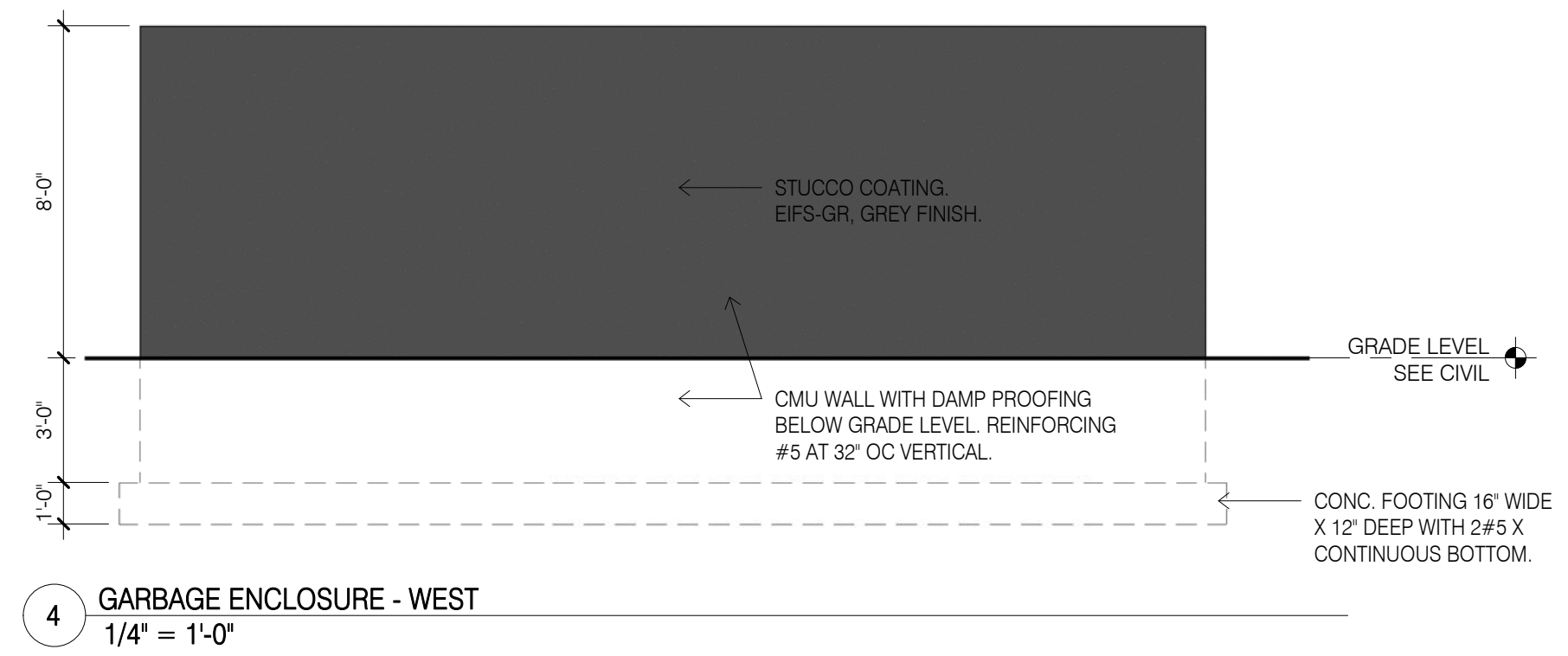
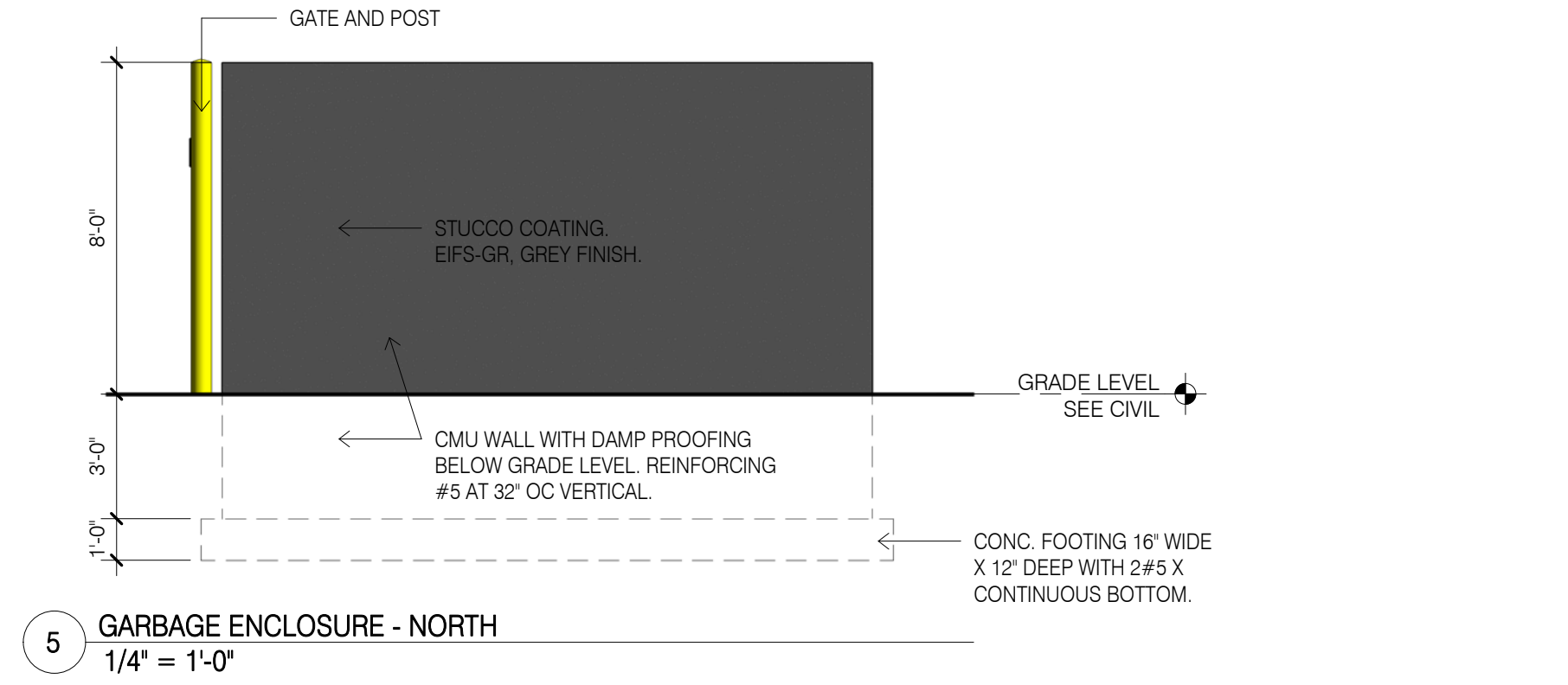
Seal

Printed Name \_\_\_\_\_  
Signature \_\_\_\_\_  
Date Issued \_\_\_\_\_

Reg. No.	Description	Date

Project number **41812** Date **08/08/14**  
Drawn by **EB/JB** Checked by **JR/CK**

**DUMPSTER PLANS, SECTION AND ELEVATIONS**









**DESIGN SERVICES  
PLUS, INC.**  
DESIGN, PLANNING  
AND DEVELOPMENT

9050 UNIT C  
RED BRANCH RD.  
COLUMBIA, MD 21045  
PHONE: 240.338.5598

CONSULTANT DISCLAIMER: This is a Prototype design only. The drawings include plans, sections, elevations, typical construction details, diagrammatic layouts of building systems and related information intended to convey the design intent for architectural, structural, civil, pool, mechanical, plumbing and electrical systems. The design information set forth within these documents may not be suitable for a particular site or certain local conditions. InterContinental Hotels Group and its retained design consultants that prepared these prototype design documents are not responsible for adaptation of the design to a particular site, compliance of the design with applicable laws, regulations, ordinances and codes, or final design reviews required to prepare construction documents. The Franchisee and its retained architect or engineering consultants shall be exclusively responsible for any final signed construction documents prepared based on information contained within these documents.

InterContinental Hotels Group DISCLAIMER: THIS IS A PROTOTYPE DESIGN ONLY. IT MAY NOT BE SUITABLE FOR A PARTICULAR SITE OR CERTAIN LOCAL CONDITIONS. InterContinental Hotels Group IS NOT RESPONSIBLE FOR ADAPTATION OF THE DESIGN TO A PARTICULAR SITE, OR FOR THE COMPLIANCE OF THE DESIGN WITH APPLICABLE LAWS, REGULATIONS, ORDINANCES AND CODES.

Project Title  
**2014 Holiday Inn Express  
Prototype, Straight Pavilion.**  
Client  
**InterContinental Hotels Group**



Seal

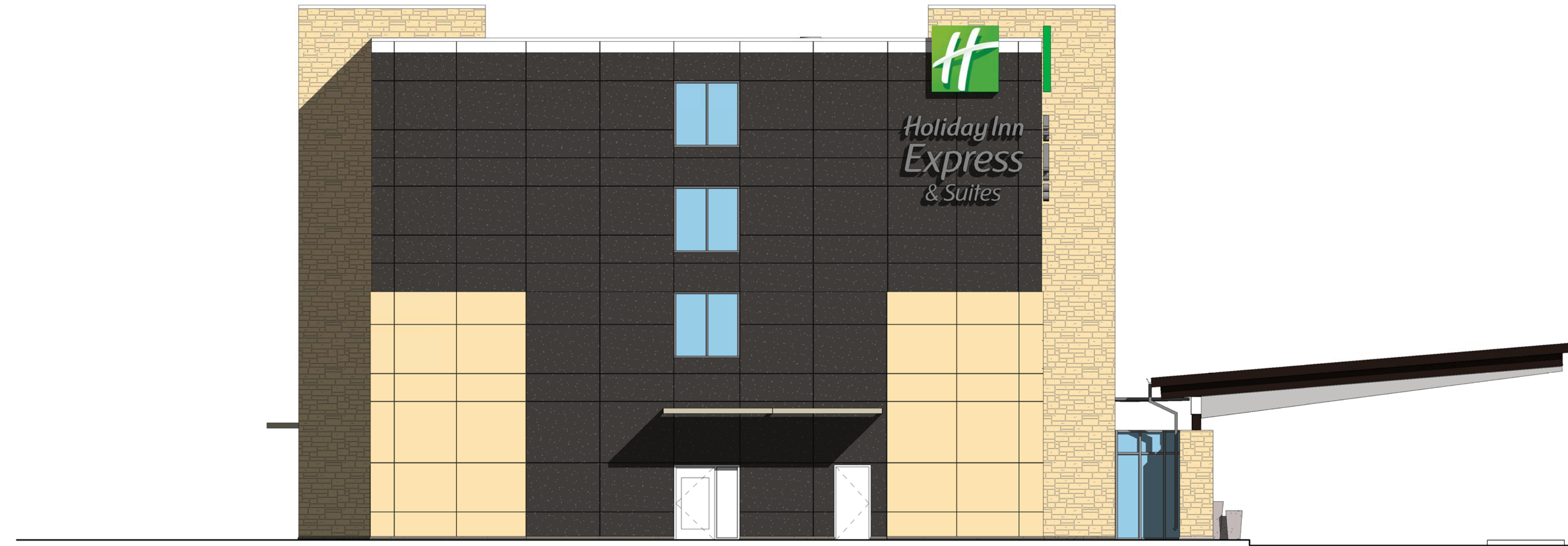
Printed Name \_\_\_\_\_  
Signature \_\_\_\_\_  
Date Issued \_\_\_\_\_

Reg. No.	Description	Date

Project number <b>41812</b>	Date <b>11/15/13</b>
Drawn by <b>Author</b>	Checked by <b>Checker</b>

**EXTERIOR  
ELEVATIONS  
COLORED**

**P201c**



**2** EXTERIOR ELEVATION - SOUTH  
1/8" = 1'-0"



**1** EXTERIOR ELEVATION - NORTH  
1/8" = 1'-0"